

The Belone Serene Family: Made for Auracast and Hearing in Noise

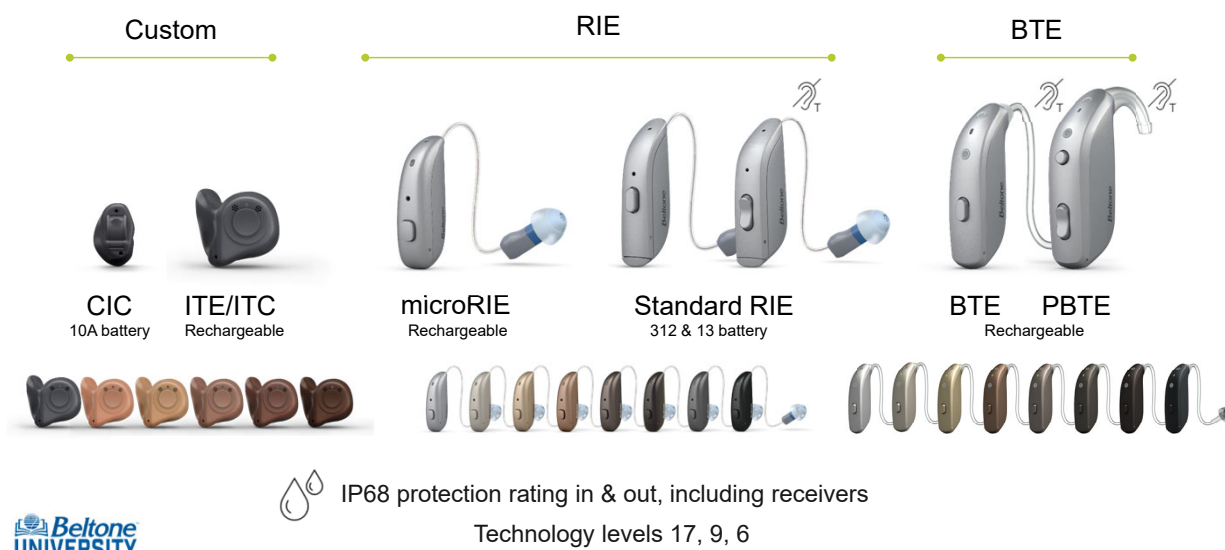
Suvhgwu#

Odxd#Vfkdfkwh#DxIG 1
Surgxfw#udlqbj #Ghyharsp hqwP dgdjhu

Webinar FAQs

- **For assistance or tech support:**
 - Call 800-753-2160
 - Email customerservice@AudiologyOnline.com
 - Use the Q&A
- **Where to get the handout:**
 - Download from Pending Courses
 - Or click on link from Chat
- **How to ask a question:**
 - Click Q&A, type your question and click Send
- **How to earn CEUs:**
 - 15-30 minutes after the webinar, go to your 'Pending Courses' page and pass the multiple-choice exam

Belone Serene Family

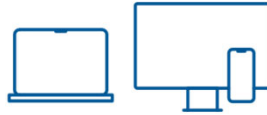


Benefits of Bluetooth LE Audio



Higher sound quality, lower power

The clearest streamed sound with the lowest latency and battery consumption for all-day streaming



Multi-stream

Connect to multiple devices simultaneously

Two-way communication: makes possible hands-free calls in Android phones



Broadcasting and audio sharing

In personal electronic devices and public places

© 2022 SIG, BCS, LLC, 2022 SIG, BCS, LLC

Bluetooth SIG Auracast | Bluetooth® Technology Website

3

Connects with Bluetooth LE Audio & Auracast



According to Bluetooth SIG **3 billion** Bluetooth LE Audio enabled devices are expected to ship annually by **2027**.¹
But Beltone Serene has it **NOW**



Direct connectivity to smartphone, tablets and computers is in the **TOP 3** satisfaction driver for hearing aids²

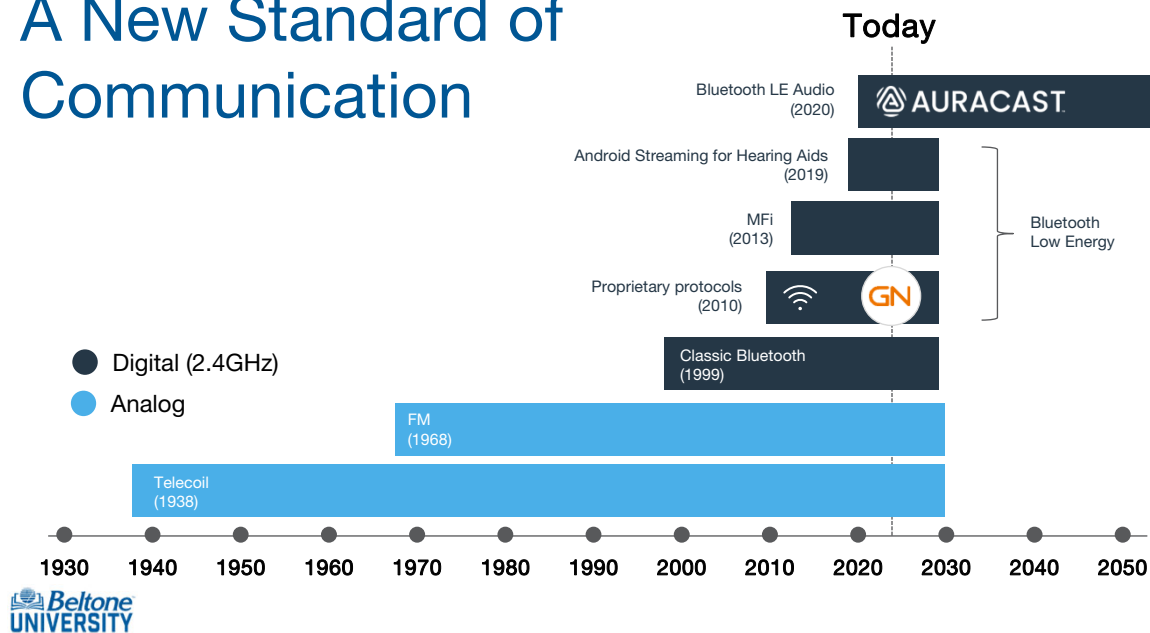


By 2030, 2.5 million locations globally will offer Auracast™ broadcast audio, by simply scanning a QR code, pushing a button or picking the place on your phone.*

Source: 1) Bluetooth SIG 2) MarkeTrak 22, 2022

4

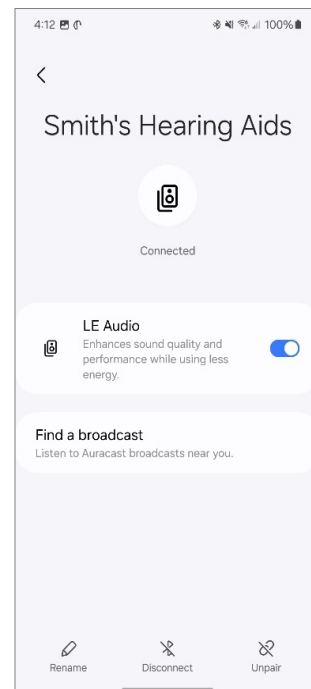
A New Standard of Communication



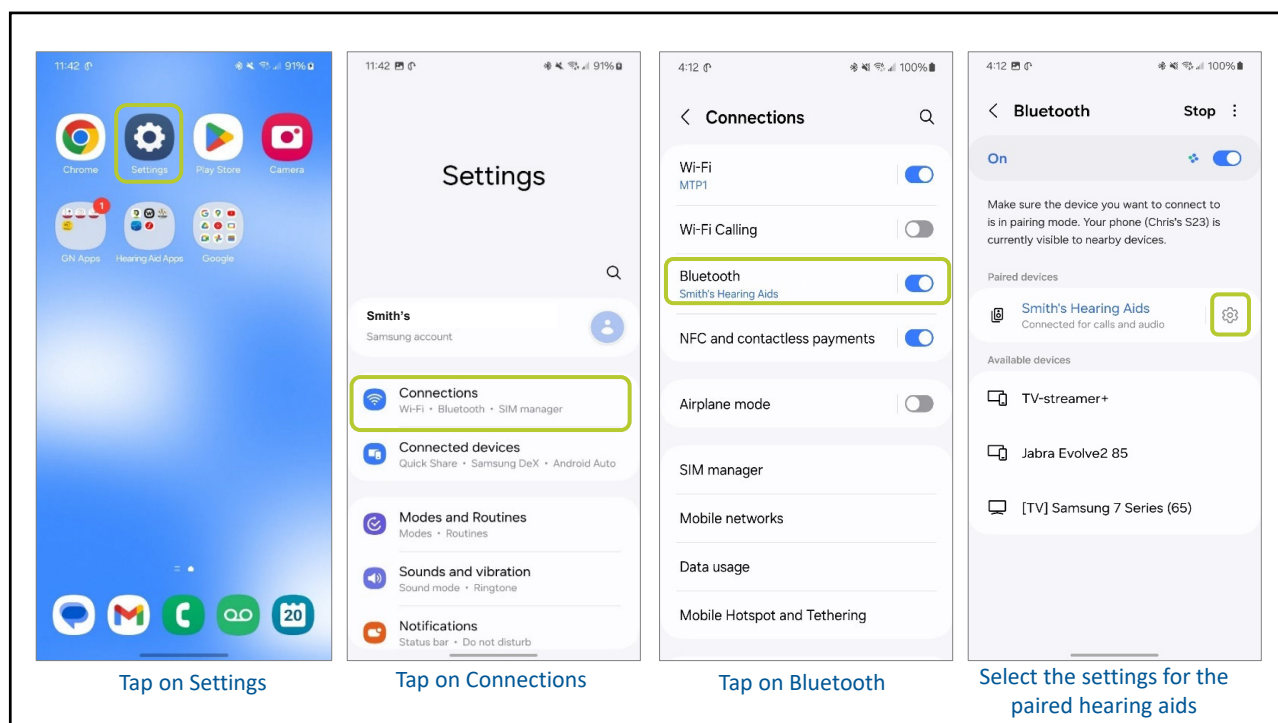
5

Samsung Galaxy S23 Broadcast Assistant

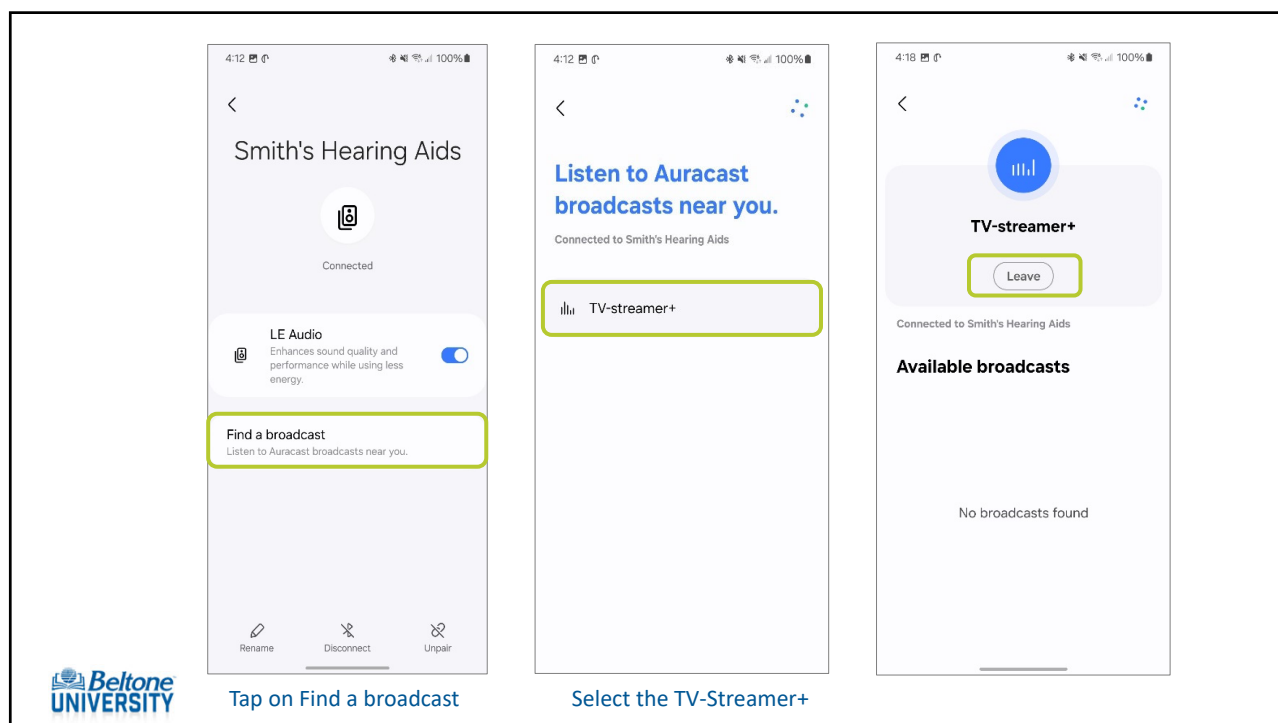
- Seen when phones are updated to Android 14
 - Beltone Serene patients can connect to our TV-Streamer+ in Auracast mode
 - Also allows for 2-way streaming meaning hands-free calls and usage of TapControl



6



7



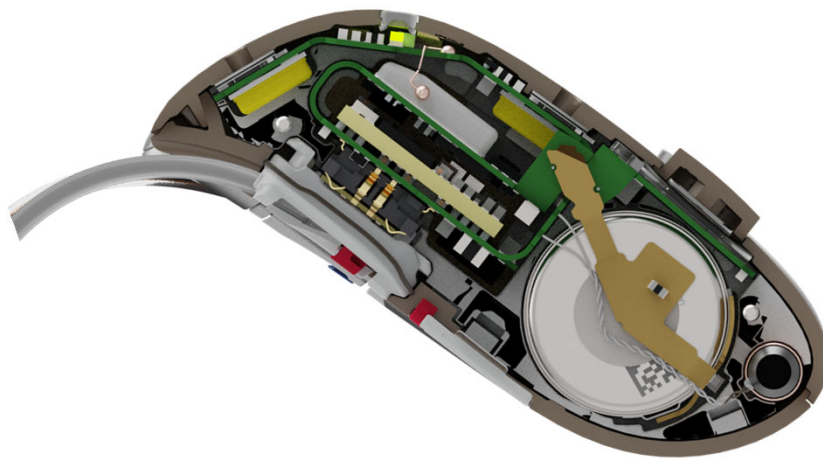
8

Beltone Serene RIEs



9

Industry's Smallest Rechargeable RIE



10

Beltone Serene Rechargeable microRIE (62S)



- All day battery on 1 charge
- Push to assign, LED Light, Push Button
- 2.4 GHz and E2E communication
- MFi and Hands-free calls
- ASHA

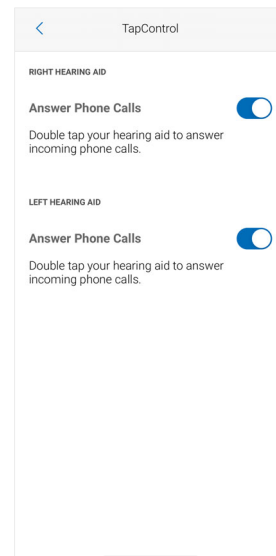
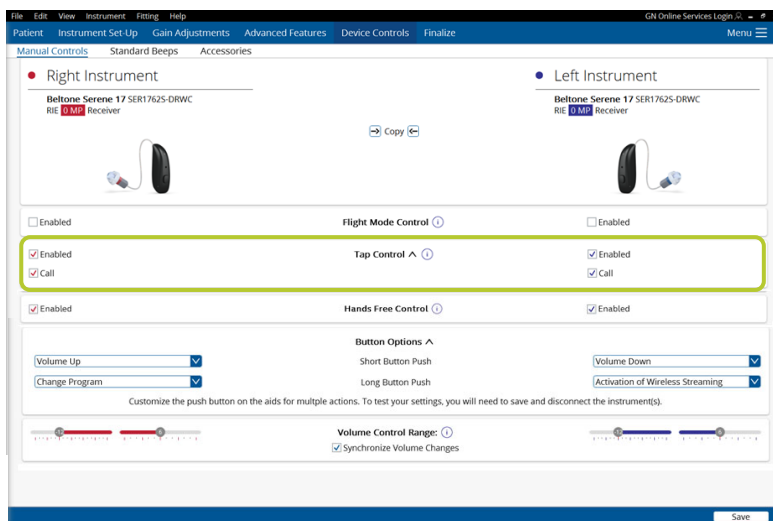
Plus

- TapControl
- OneTouch Pairing to the TV-Streamer+
- Bluetooth Low Energy Audio
- Ready for Auracast



11

TapControl



12

All-day Power

 **30 hr**

Maximum for the
microRIE on one
charge

~**24 hr**

Typical use time on
one charge



20 hr

When streaming audio
50% of the time

Ultra fast charging

Charge time

3 hr  **24 hr** (all day)

1 hr  **8 hr** (business day)



13

Beltone Serene Replaceable Battery RIEs



63 RIE using
312 battery

64 RIE using
13 battery

- Push Button/Multi Toggle button
- Push to assign
- 2.4 GHz and E2E communication
- MFi and Hands-free calls
- ASHA

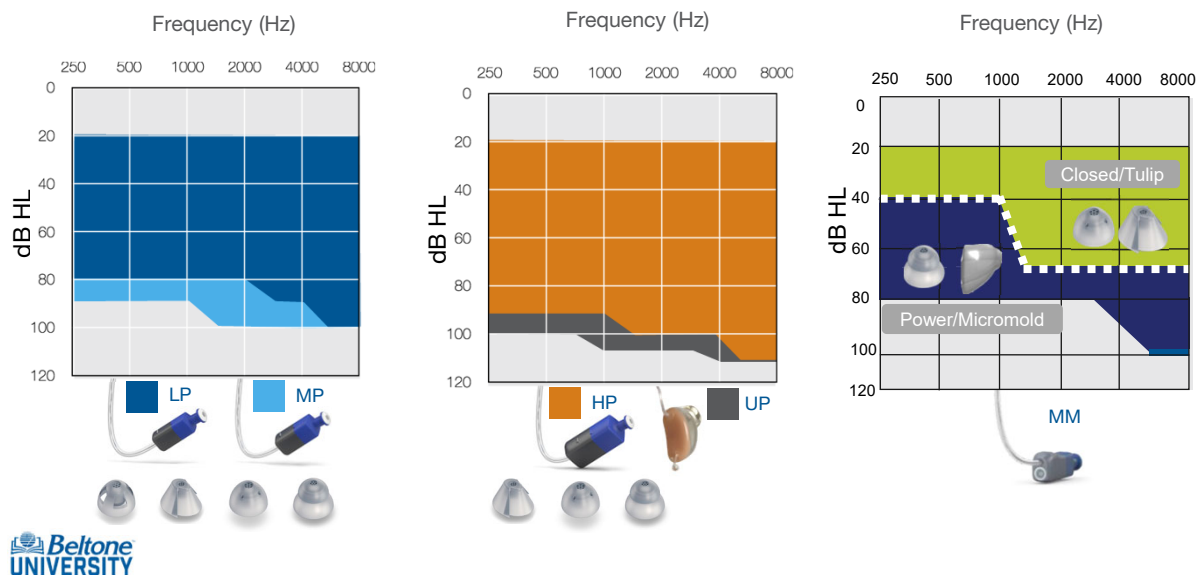
Plus

- OneTouch Pairing to the TV-Streamer+
- Bluetooth Low Energy Audio
- Ready for Auracast



14

SureFit 3 Receivers Fitting Ranges



15

M&RIE is Proven to:

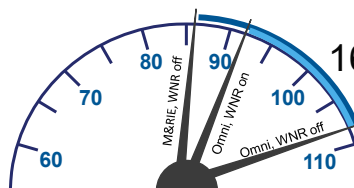
- Improve sound localization
- Provide a more natural sound
- Reduce listening effort
- Eliminate wind disturbance

99%

of users who trial M&RIE keep the M&RIE receiver after trial

22dB Natural wind noise reduction with M&RIE

16dB attenuation



Wind noise level (dBA)

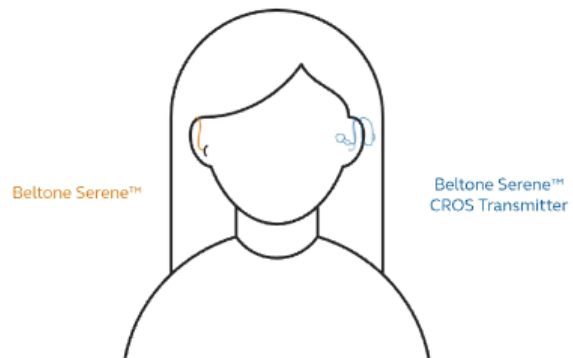


*National Acoustic Laboratories, Kitterick & Kwok (2023)

16

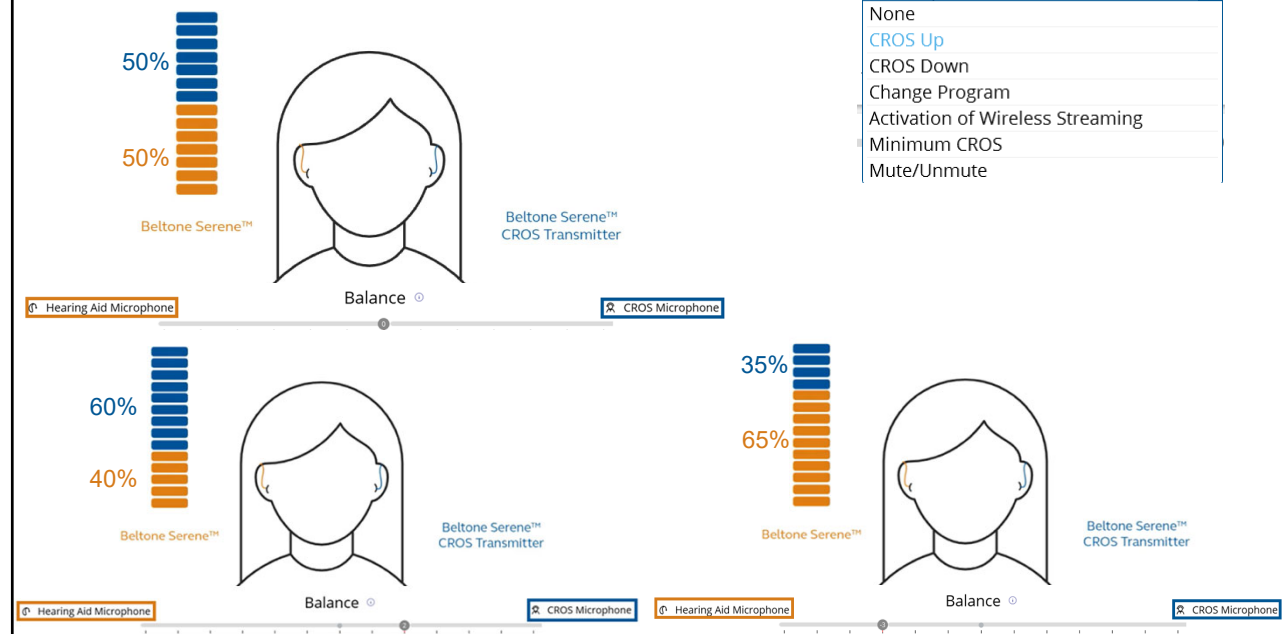
Industry's Smallest Rechargeable CROS

- For Patients with SSD
- microRIE size, color and charging options
- Has directionality
- Only feature is Balance
- Use LP, MP, or HP receiver to hold transmitter on ear
- 16 hours of use on 1 charge



17

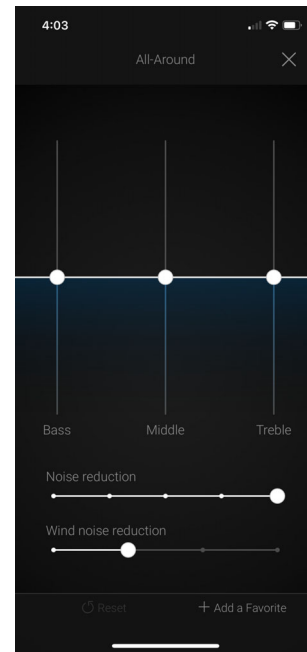
Balance



18

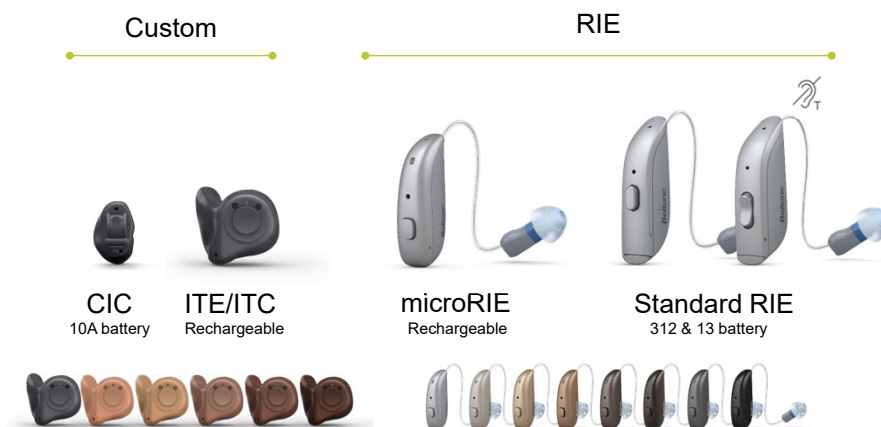
HearMax App Updated

Sound Enhancer now seen with a CROS/BiCROS fitting



19

Beltone Serene Family



IP68 protection rating in & out, including receivers

Technology levels 17, 9, 6

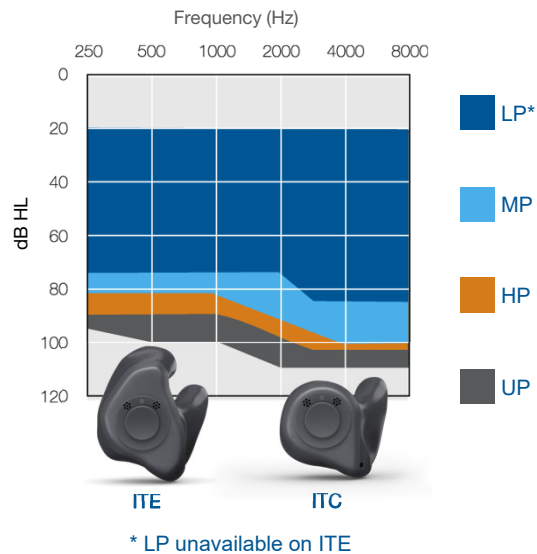
20

Beltone Serene Rechargeable Customs

- All day battery on 1 charge
- Replaceable microphone filter ring
- Push to assign, LED Light, Push Button
- 2.4 GHz and E2E communication
- MFi/Hands-free calls & ASHA

Plus

- OneTouch Pairing to the TV-Streamer+
- Bluetooth Low Energy Audio
- Ready for Auracast



21

Custom Charger

30 hr ~ **24 hr** **20 hr**

Maximum on one charge Typical use on one charge When streaming audio 50% of the time

Use time on one 5-hour charge

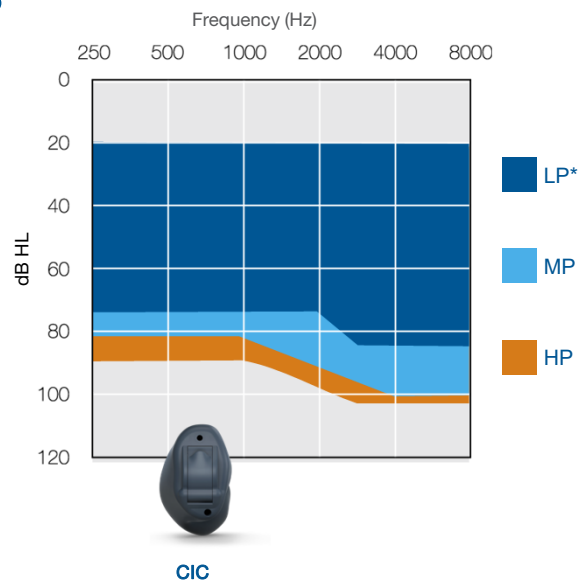
- The lid must be down for charging to begin
- Custom inserts must be placed into the charger



22

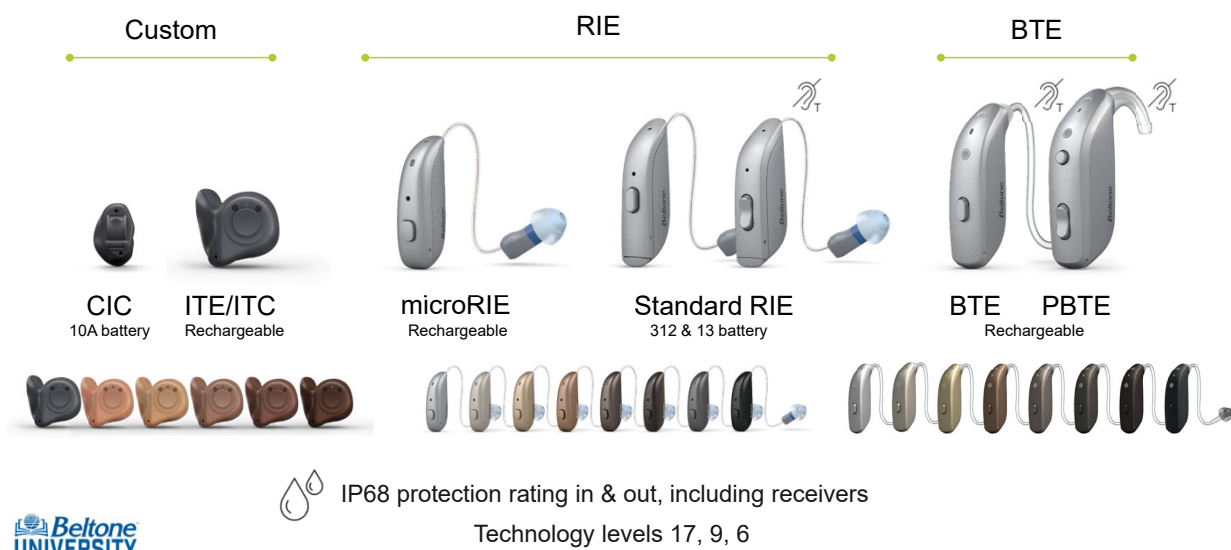
Beltone Serene CICs

- Sonion Premium receiver
- Uses size 10A zinc air battery
- Non-wireless (no E2E, 2.4GHz or BLE)
- Optional push button
- **Cabled fitting** (SpeedLink or HiPro II with gray cables using flex strips)



23

Beltone Serene Family



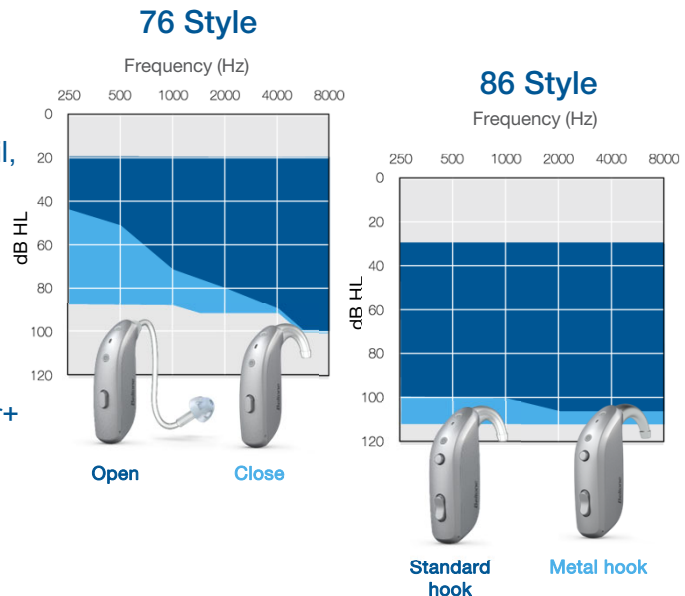
24

Beltone Serene Rechargeable BTEs

- Configurable ear hooks
- Lithium ion/induction rechargeability
- All day battery on 1 charge
- Replaceable microphone filters, T-coil, programmable LED light
- 2.4 GHz and E2E communication
- MFi/Hands-free calls & ASHA

Plus

- OneTouch Pairing to the TV-Streamer+
- Bluetooth Low Energy Audio
- Ready for Auracast



25

LED Light Controls in Solus Max

- Located under 'Devices Controls, Manual Controls'
 - Disable → Only indicates charging status
 - Flash Once → In addition to charging status also indicates manual control changes
 - Continuous Flash → In addition to manual control and charging status, the LED will flash every 5 seconds

LED Light Controls



26

Desktop Charger

 **30** hr

Maximum on one charge

~24 hr

Typical use time on one charge

20 hr

When streaming audio
50% of the time

Use time on one 3-hour charge



Beltone
Serene 76



Beltone
Serene 86



Specific charger for the 76 and 86 styles

27

Beltone Serene Family



CIC



ITE/ITC



SER62S-DRWC



CSE62S-DRWC



SER63-DRW






SER64-DRW



SER76-DWC



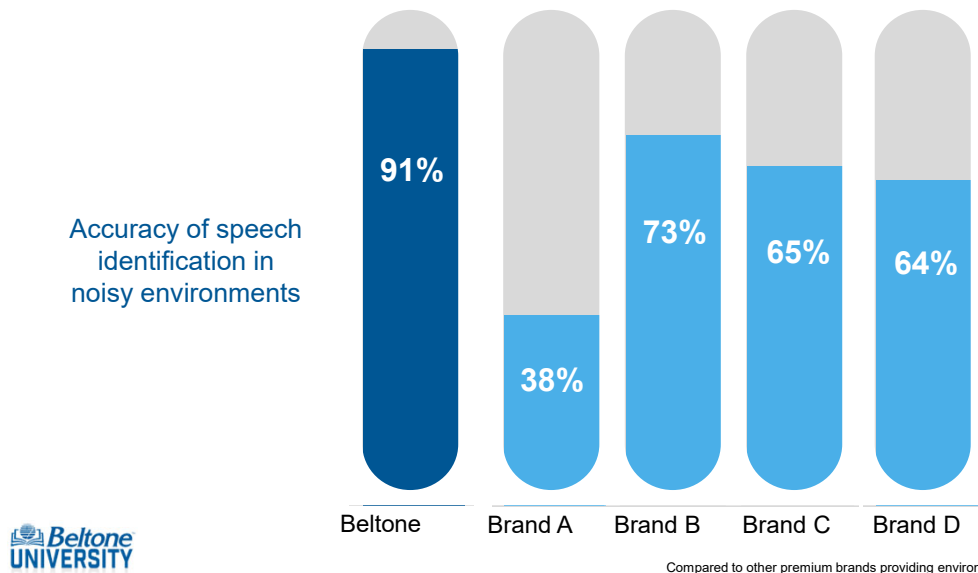
SER86-DWC

	CIC	ITE/ITC	SER62S-DRWC	CSE62S-DRWC	SER63-DRW	SER64-DRW	SER76-DWC	SER86-DWC
Colors								
Battery	10A	Rechargeable	Rechargeable		312	13	Rechargeable	
Bluetooth LE Audio		✓	✓		✓	✓	✓	✓
Auracast		✓	✓		✓	✓	✓	✓
TV-Streamer+		✓	✓		✓	✓	✓	✓
Compatible with CROS Transmitter			✓		✓	✓		
TapControl			✓					
Control	Optional Prog. push button	Prog. push button	Prog. push button	Prog. push button	Prog. push button	Multi-function button	Prog. push button	Push button & toggle switch
T-coil						✓	✓	✓



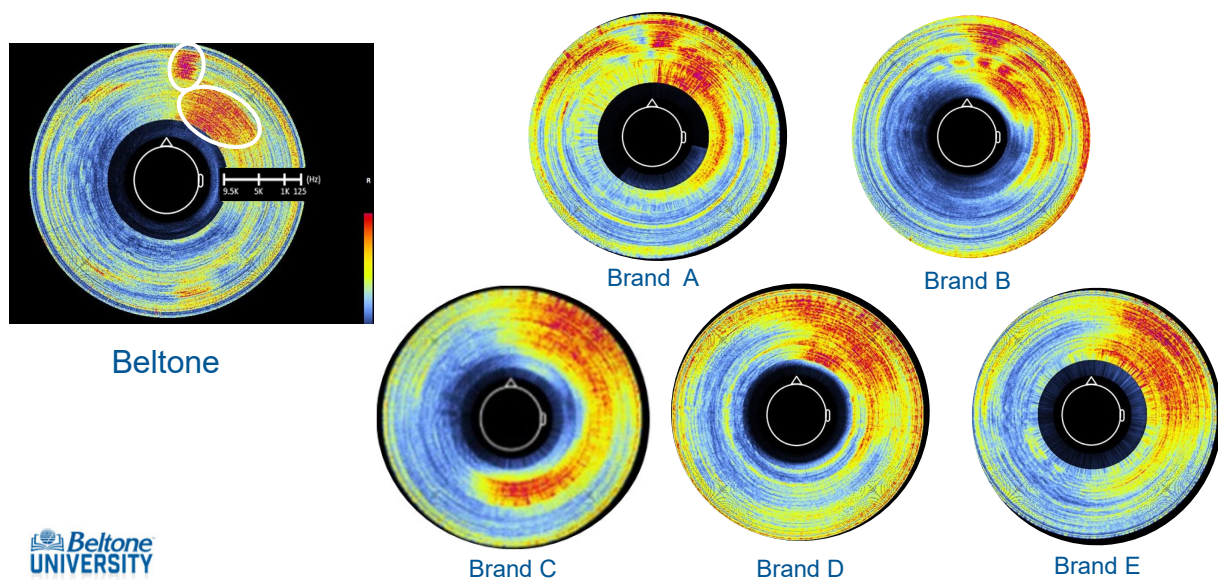
28

Industry's Most Accurate Environmental Classifier



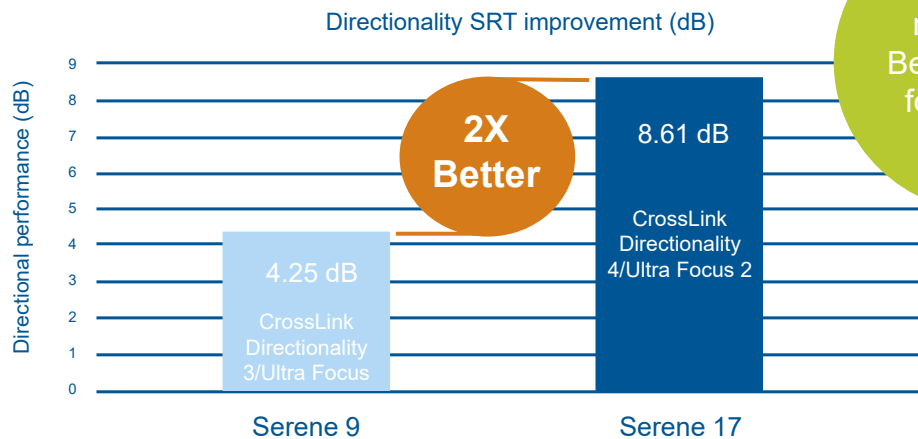
29

Industry's Most Narrow Beamformer



30

Proven 150% Improvement in Speech Understanding in Noise



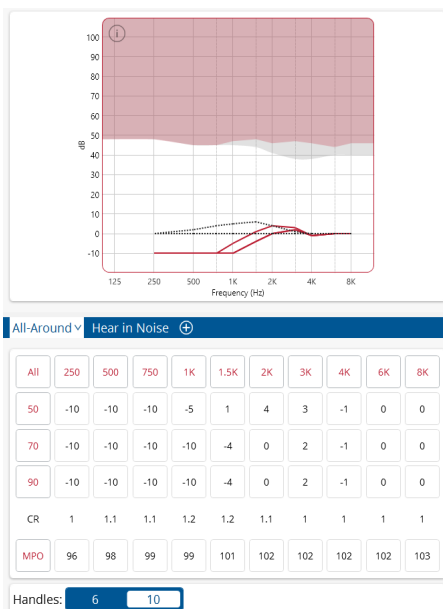
89% of users recommend Beltone Serene for hearing is noise



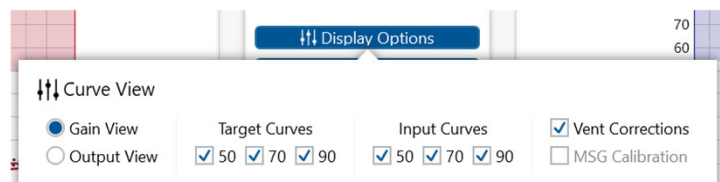
Jespersen et al (2022)

31

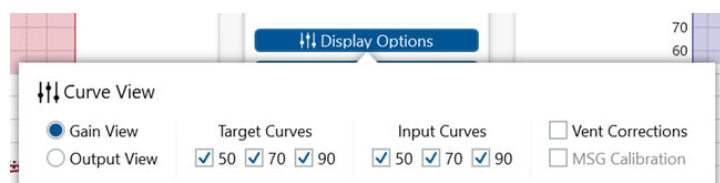
Negative Gain Handles



- Can go to a maximum of -10 dB for all frequencies

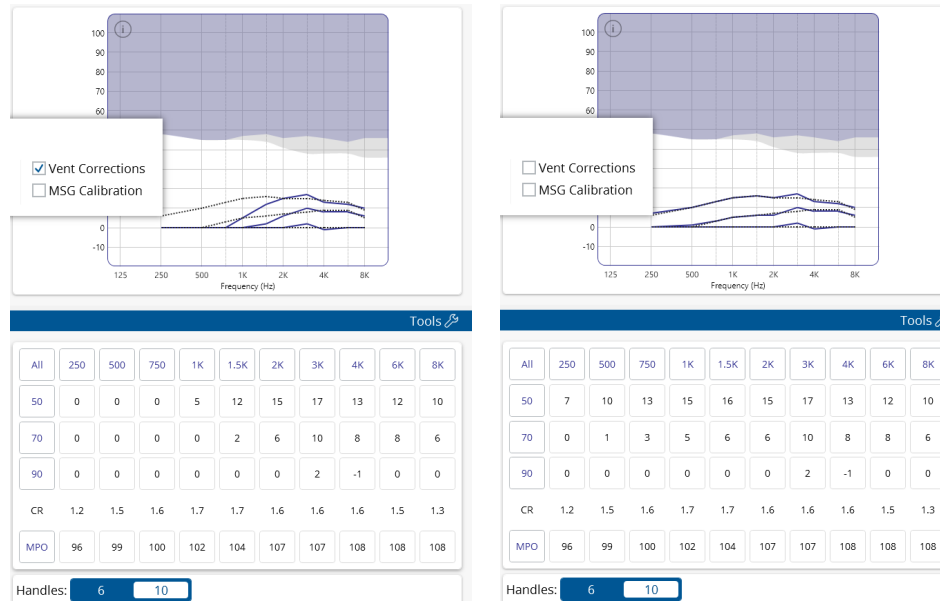


- To see negative gain in the low frequencies need to turn off Vent Corrections



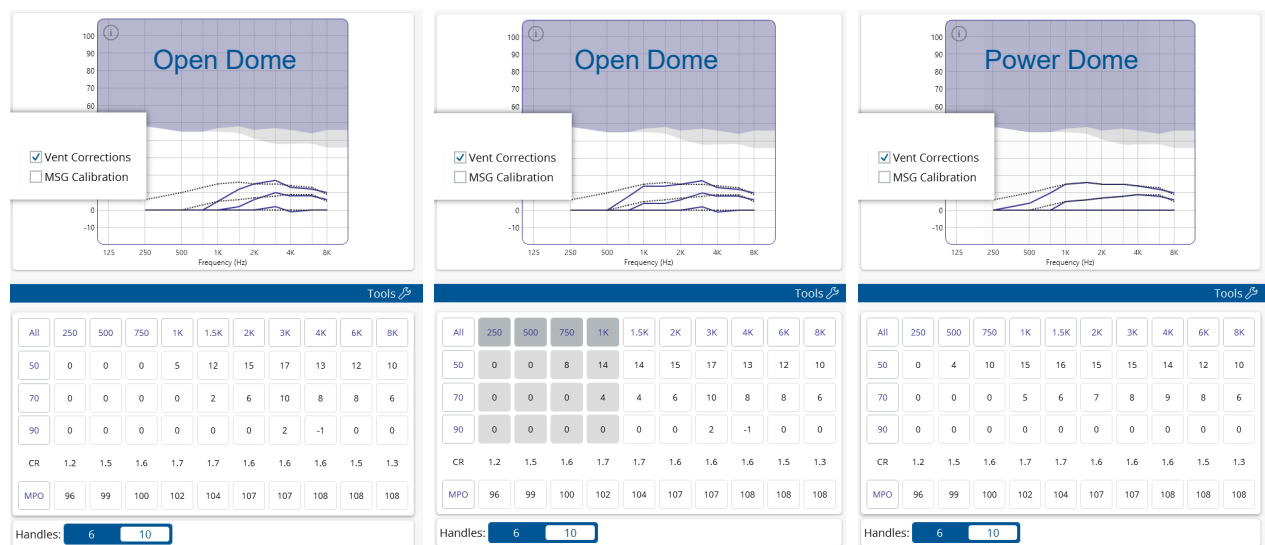
32

What are Vent Corrections?



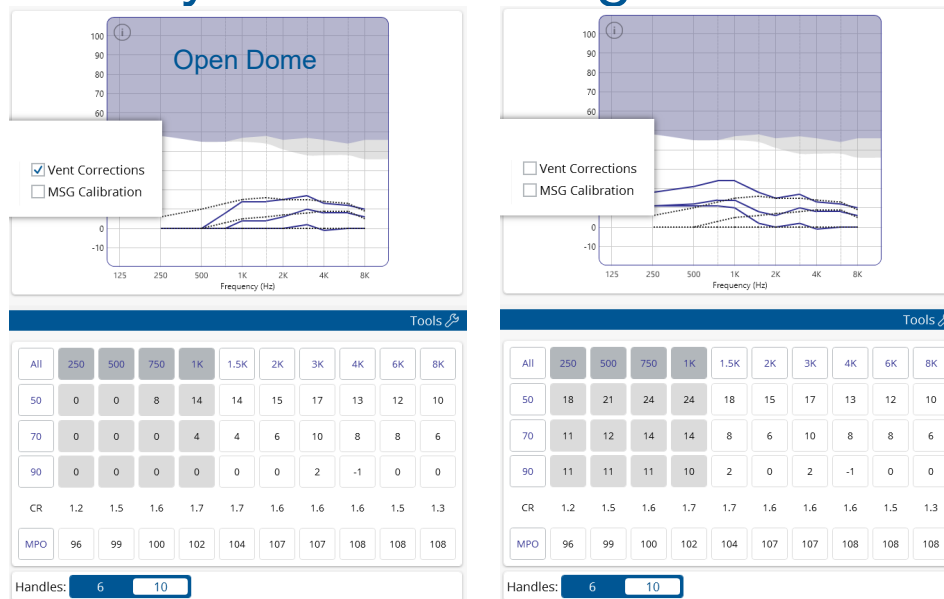
33

What are Vent Corrections?



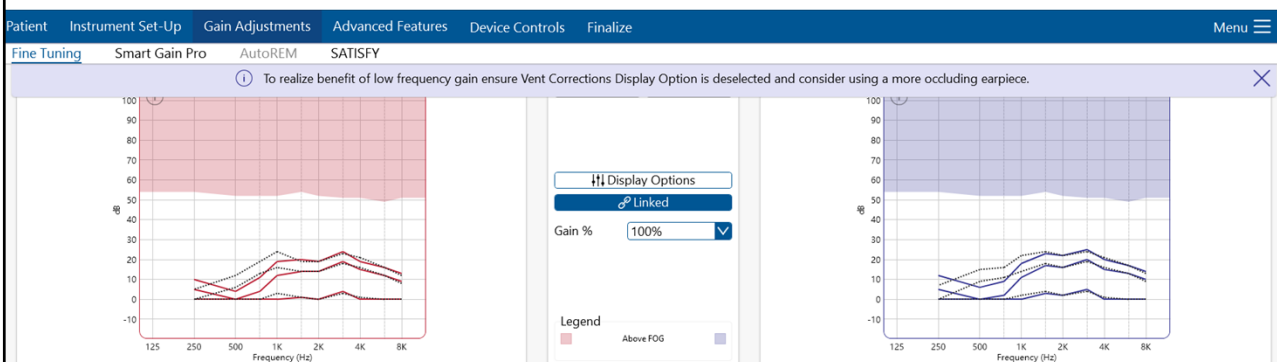
34

But I really did increase gain!



35

Vent Corrections: New information message

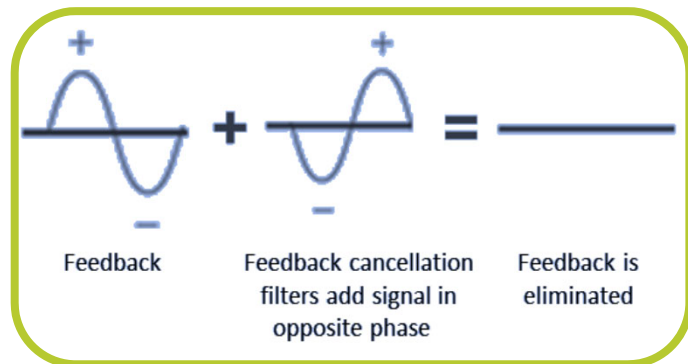


- Message will appear when (independent of status of vent corrections)
Gain handles at 250 Hz and 500 Hz are exclusively selected and increased ≥ 10 dB above target, and gains at 1.5 kHz above are within 10 dB of target (as seen above)

36

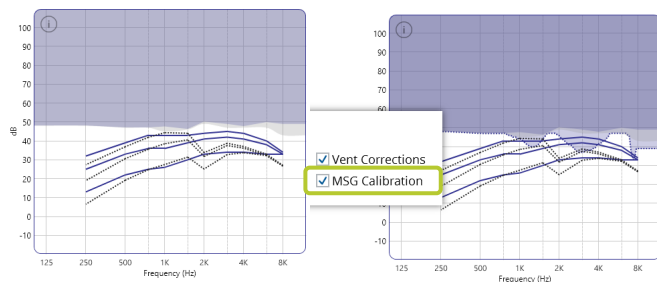
Feedback Eraser 2: How it Works

- Helps to reduce the intensity and occurrence of feedback
- Applies two individual systems, working together to provide maximum feedback free hearing
- Uses a phase-inverted signal that does not compromise sound quality or headroom



Two Systems Working in Tandem

- Static system:
 - Helps control feedback due to physical properties of the hearing aid and ear (unchanging factors)
- Dynamic system:
 - Helps control feedback due to significant changes in the feedback pathway like placing a phone near the ear, hugging or chewing (moving factors)
- These properties are determined by the Maximum Stable Gain (MSG) calibration



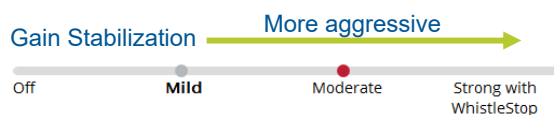
Gray area is the Feedback Guard

Light blue area is the MSG calibration

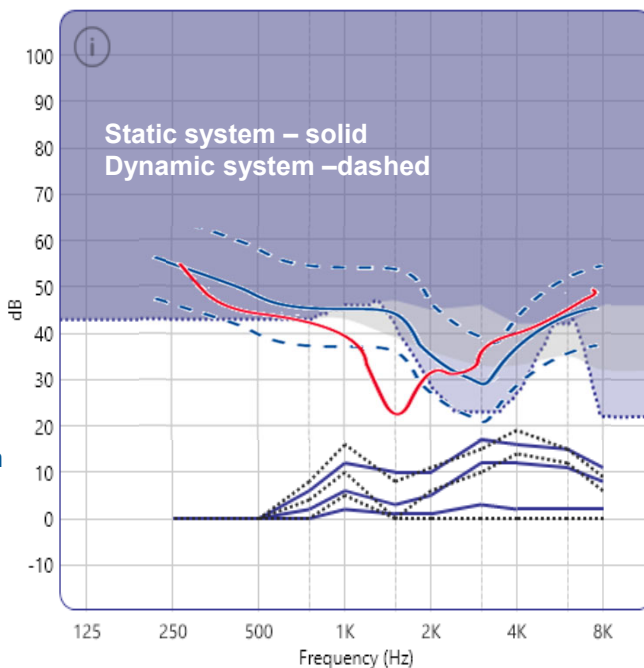
Remember in Solus Max to view the MSG curve, it needs to be selected

What Are The Levels Adjusting?

- Gain stabilization

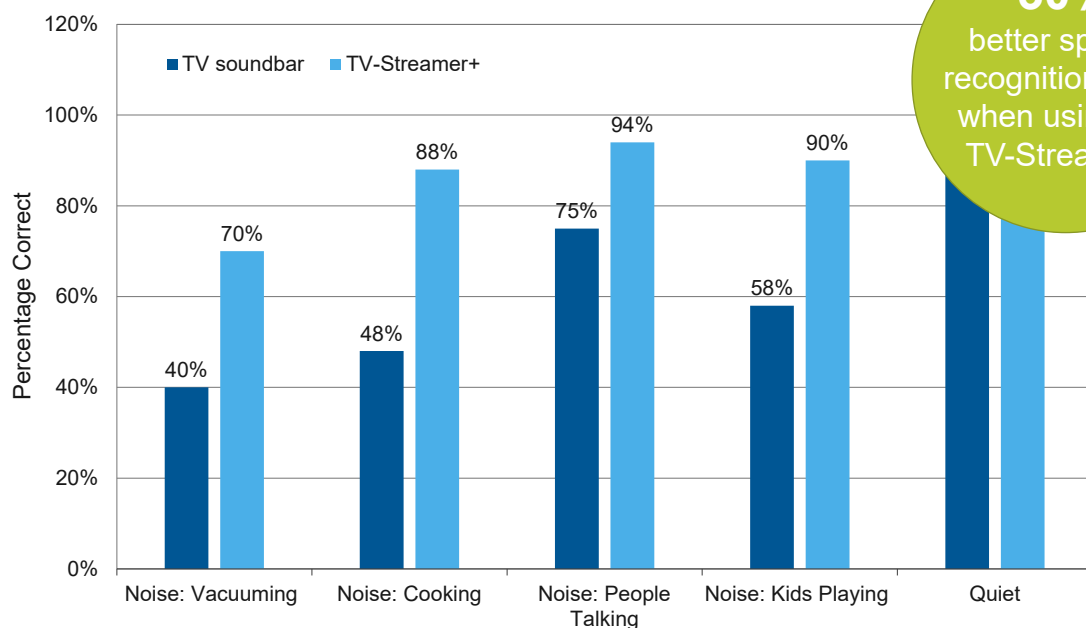


- When the calibrated system can't control feedback on its own gain stabilization kicks in



39

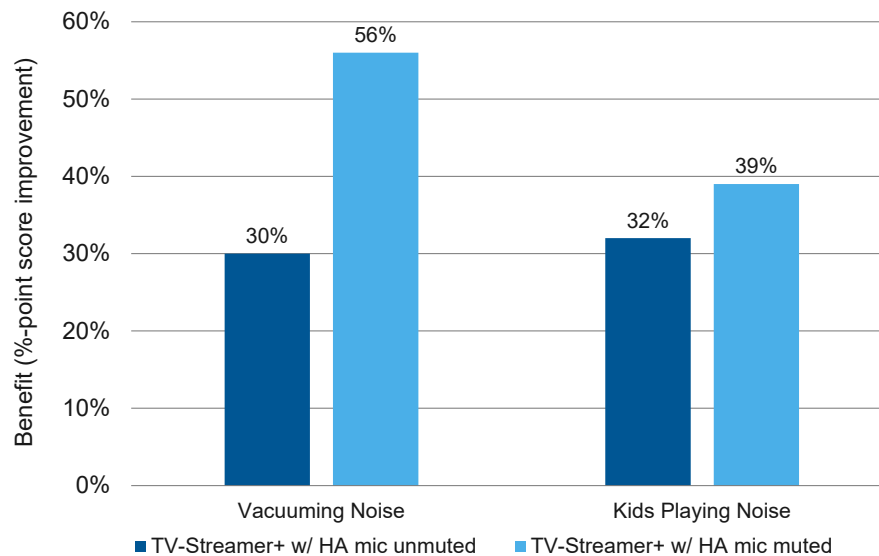
The Results



30%
better speech
recognition score
when using the
TV-Streamer+

40

Results With Hearing Aid Mics Muted



41

Pairing Sequences

Step # 1



Pair hearing aids to
TV-Streamer+

Step # 2



Pair hearing aids to
phone and Beltone
HearMax app

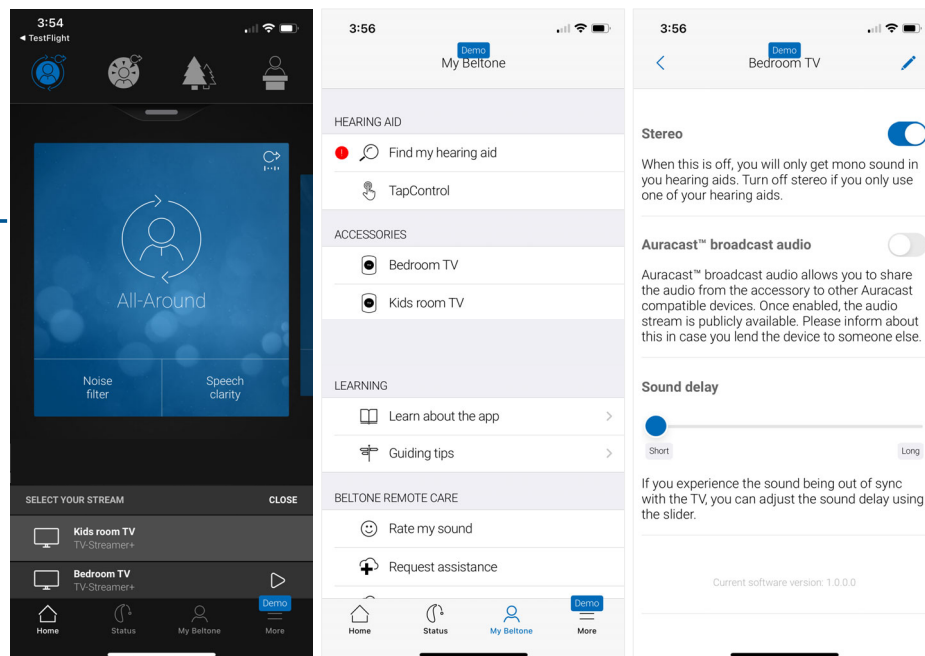
Step #3



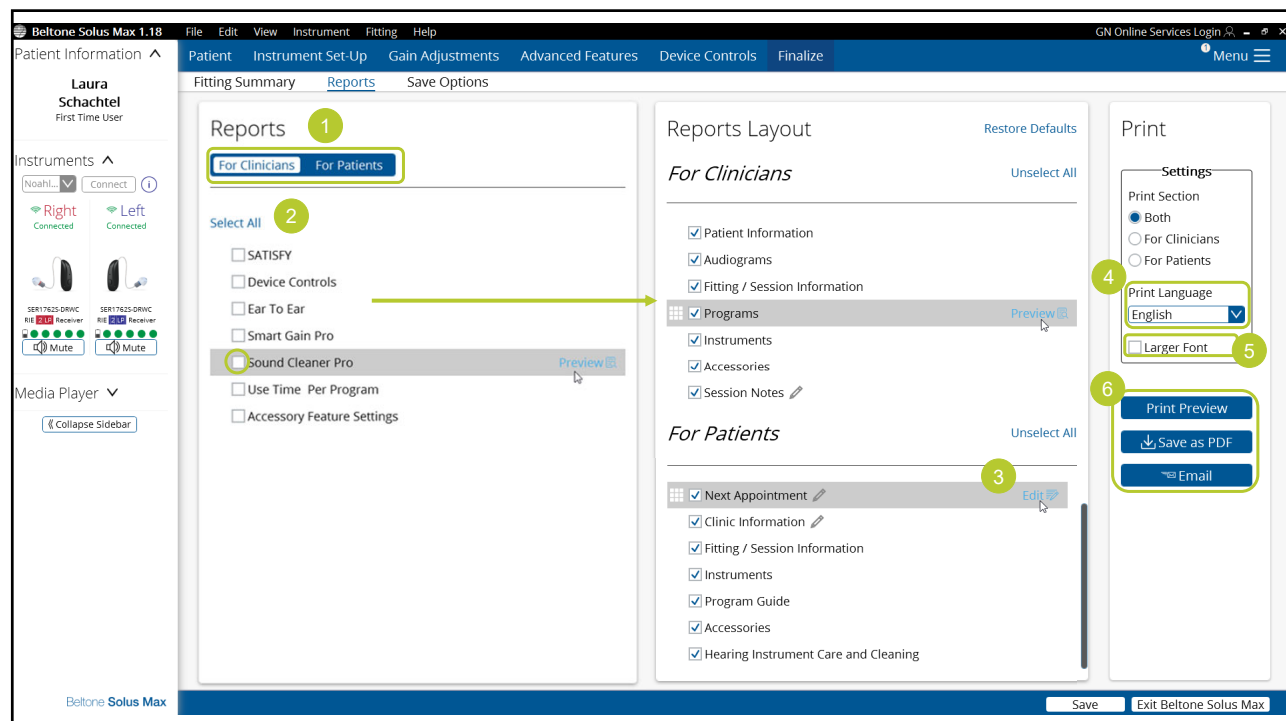
Pair TV-Streamer+ to
Beltone HearMax app

42

TV-Streamer+ available in demo mode



43



44

App Consent Flow

The image displays the App Consent Flow process across three mobile app screens and a desktop interface.

Screen 1: Consent to Data Processing

To provide you Beltone Remote Care, we need your consent to GN Online Services and data processing.

What's in it for you?

Part 1: Will give you access to beneficial online services like hearing aid software updates.

Part 2: Will help us give you an improved hearing experience. By giving us insights into usage trends, we can improve our products and services for you in the future.

Screen 2: GN Online Services - Part A

Information: When the location and related services are in use, the user may collect information that shows tries and locations where the app is used. For the purpose of optimizing your location function on your mobile device at any prevent the collection and processing of location.

ON OF CONSENT - PART A

I agree, and submitting this form, I (or my legal guardian if I am under 16, my parent or legal guardian) consent to the Hearing Care and the Manufacturer (and the other listed) processing my personal data, including data, for the purposes, and in the manner, set out above until such time as I choose to consent.

I agree, specifically to the out in this Part A of this notice (which order to receive the GN Online

Screen 3: GN Online Services - Part B

I agree, and submitting this form, I (or my legal guardian if I am under 16, my parent or legal guardian) consent to the (and the other third parties listed) processing my personal data, including health data, and in the manner, set out above until such time as I choose to withdraw my consent.

I agree, specifically to the out in this Part B of this notice (which will in order to use this mobile app).

Desktop Interface:

Menu: Patient, Instrument Set-Up, Gain Adjustments, Advanced Features, Device Controls, Finalize

Profile, In-Situ Fitting, Data Logging, Remote Care

All Sessions (Refresh)

24 Feb 2020

In-Office Session - 10:23 AM

Connected In-Office

Remote Fine-tuning: On/Off

Live Assistance: On/Off

Patient Consent Status: Accepted 10/19/2023

45

Edit Consent Flow

The image shows the Edit Consent Flow process in the mobile app.

Menu: Patient, Instrument Set-Up, Gain Adjustments, Advanced Features, Device Controls, Finalize

Profile, In-Situ Fitting, Data Logging, Remote Care

All Sessions (Refresh)

24 Feb 2020

In-Office Session - 10:23 AM

Patient Consent Status: Withdrawn 10/19/2023

My Beltone

HEARING AID: Find my hearing aid

LEARNING: Learn about the app, Guiding tips, Tips for iPhone

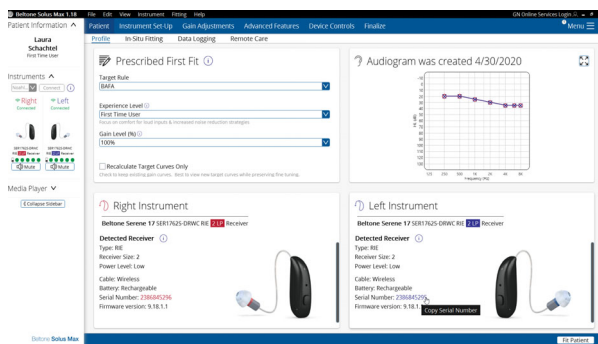
BELTONE REMOTE CARE: Activate Beltone Remote Care

Home, Status, My Beltone, More

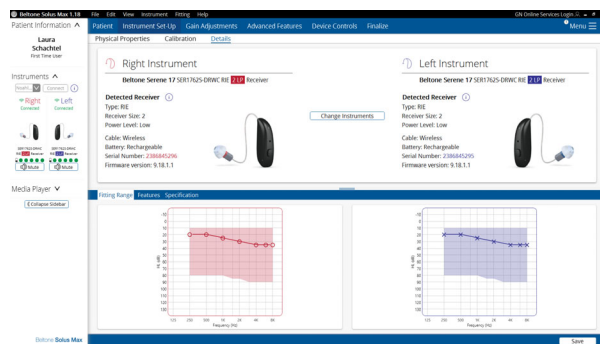
46

Serial Number Copy Link

Patient: Profile screen



Instrument Set-Up: Details screen



47

Learning Summary



The Beltone Serene product portfolio now includes rechargeable BTEs, customs and a non-wireless, rechargeable CIC.



Patients have the benefits of hearing their best in noise with CrossLink Directionality 4 and Ultra Focus 2 and Bluetooth LE Audio and Auracast.



In Solus Max 1.18 the reports page has been modernized and offers more flexibility and Remote Care consent has been moved into the HearMax app. Also, in the HearMax app patients have access to sound enhancers when using our CROS Transmitter and our TV-Streamer+ can be view and demo mode.



48