

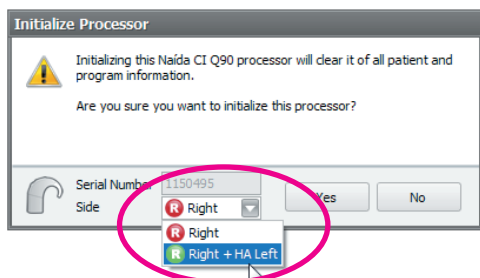
5 Easy Steps to Program Naída CI for Bimodal use in SoundWave™ Fitting Software



Advanced Bionics



STEP 1: INITIALIZE NAÍDA CI AS BIMODAL



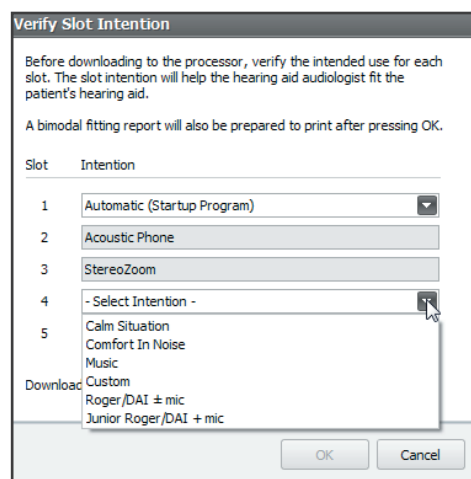
Initialize Naída CI bimodally by selecting *Right + HA Left* or *Left + HA Right*

STEP 2: CREATE PROGRAMS FOR NAÍDA CI

Naída bimodal hearing solution recipients can benefit from the following technologies: StereoZoom (Naída CI Q90 only), ZoomControl, DuoPhone, QuickSync, and DirectTouch

STEP 3: SELECT DOWNLOAD AND CHOOSE APPROPRIATE SLOT INTENTION LABELS

- Select/Verify Slot Intention label(s) from available options
- Select OK to complete download
- After download is complete, a new tab will open with the Bimodal Fitting Report



STEP 4: PRINT/EMAIL THE BIMODAL FITTING REPORT FOR USE WHEN PROGRAMMING PHONAK NAÍDA™ LINK

STEP 5: CONFIGURE COMPILOT (IF APPLICABLE)

Configure ComPilot in SoundWave with the patient file open for bimodal streaming and remote control use



5 Easy Steps to Program Phonak Naída™ Link for Bimodal Use in Target

PHONAK
life is on



STEP 1: OBTAIN THE BIMODAL FITTING REPORT FROM SOUNDWAVE

STEP 2: CONNECT THE NAÍDA LINK UP OR RIC

Enter the patient name and audiogram if necessary

STEP 3: ENTER THE PAIRING ID AND ENSURE THE ADAPTIVE PHONAK DIGITAL BIMODAL FITTING FORMULA IS SELECTED

The screenshot shows two windows. The left window is the 'BIMODAL FITTING REPORT' for 'Bionic Buddy' (Birth Date: 12/15/1996). It lists 'Cochlear Implant (CI)' and 'Hearing Aid (HA)'. Under 'Cochlear Implant', it shows 'Processor Serial Number: 110495' and 'Fitting Date: 05/20/2016'. Under 'Hearing Aid', it shows 'Phonak Naída Link RIC' and 'Processor Serial Number: 110495'. A 'PAIRING ID# 52722' is highlighted with a pink arrow pointing to the right window. The right window is the 'Pairing ID' dialog box, which prompts the user to 'Enter pairing ID to activate binaural functions.' It has a text input field for the pairing ID, a checked checkbox for 'Select "Adaptive Phonak Digital Bimodal" fitting formula', and an information icon with the text 'Ensure the following: Both devices have the same program structure, Both devices have QuickSync enabled'. 'OK' and 'Cancel' buttons are at the bottom.

STEP 4: USE THE BIMODAL FITTING REPORT TO CHOOSE PROGRAM SETTINGS AND DEVICE OPTIONS FOR PHONAK NAÍDA LINK

The screenshot shows the 'Device options' tab in the Target software. It displays 'Binaural functions activated' with 'Pairing ID 52722'. A 'Naida Link UP' icon is shown with 'Program change (with QuickSync)' and 'SoundFlow (Startup)' options. A 'Volume (with QuickSync)' option is also visible. At the bottom, there is a 'FUNCTION' dropdown menu set to 'Program change' and a checked 'QuickSync' checkbox. The bottom navigation bar includes 'Push button', 'Volume button', 'Volume behavior', 'Signals & alerts', 'Startup', and 'DataLogging'.

STEP 5: SAVE AND CLOSE THE SESSION

Reminder: ComPilot should not be managed in Target for use with the Phonak Naída™ Link